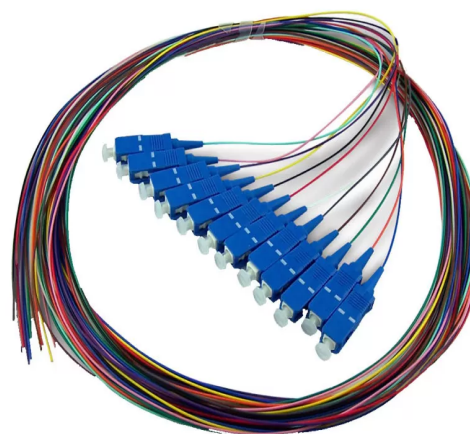


Fiber Optic Pigtail

SC Pigtail

Overview

The Cablexa of fiber cable assemblies range covers both single mode and multimode patch cords and pigtails which are fully qualified to RoHS standards. Fiber Optic Pigtails are utilized to achieve accurate mounting for precision alignment of fiber optical components. Assemblies are available in all major fiber optic connector types; a range of cable color options available.



Features

- Low insertion loss, high return loss;
- High environmental stability;
- Available fiber cable diameters: $\Phi 0.9$, $\Phi 2.0$, $\Phi 3.0$ mm;
- Simplex, duplex or multi-fiber
- Pigtail Types: Bundle, Ribbon, Waterproof, Armored
- Connector Types: LC, FC, SC, ST, MU, MTRJ, E2000
- Fiber cores: Simplex, Duplex, 4 fibers, 6 fibers, 8 fibers, 12 fibers, 24 fibers, 48 fibers etc.
- Fiber Mode: Singlemode (G.652), Multimode (OM1/OM2/OM3/OM4)
- Low insertion loss and back reflection loss
- Good exchangeability; Good Durability
- High temperature stability
- Compliant to IEC, TIA/EIA, NTT and JIS specifications

Technical Specifications

Parameters	SC/PC	SC/UPC	SC/APC
Working Temperature (°C)		-25 — +75	
Insertion Loss (dB)	≤ 0.25	≤ 0.25	≤ 0.25
Return Loss (dB)	≥ 45	≥ 50	≥ 60
Durability (Times)	≥ 600	≥ 600	≥ 600
Tensile strength (N)	≥ 55	≥ 55	≥ 55